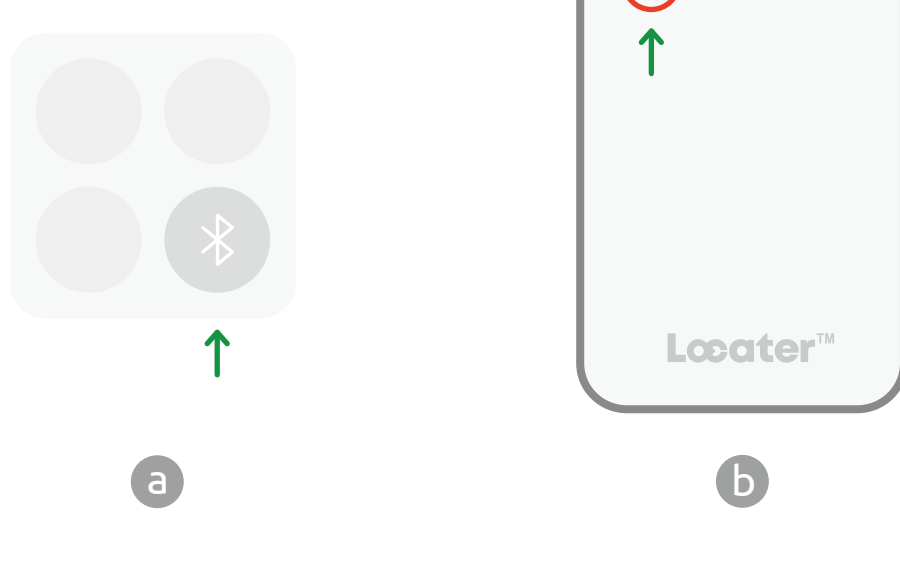


User Manual

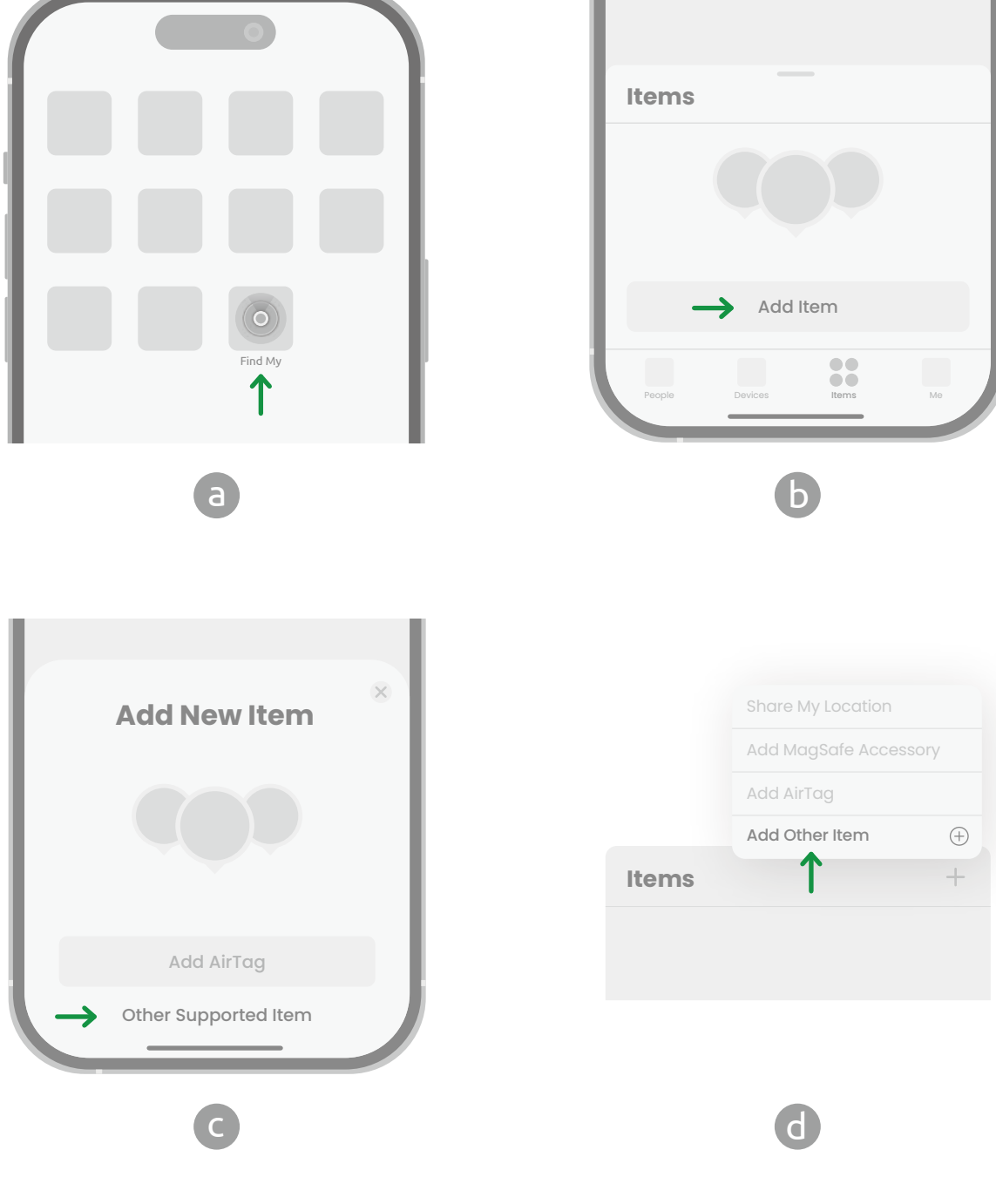
1. Turn on the device

- Enable **Bluetooth** on your phone.
- Press and hold the button for **5 seconds**, the device will beep and turn on.



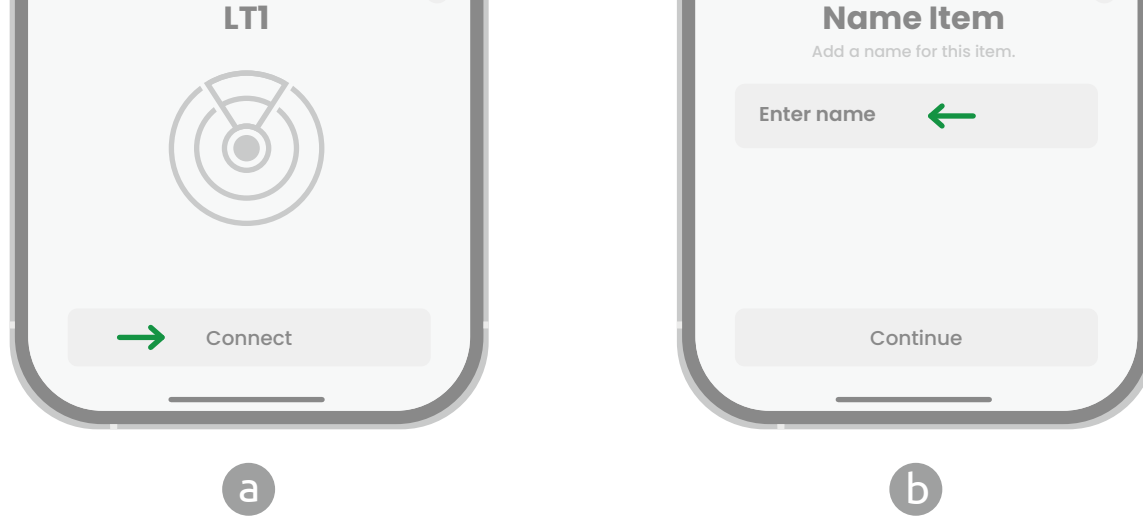
2. Open Find My

- Open the APP that comes with the iOS system: **Find My**;
- Choose: Items — Add Item;
- Choose: **Other Supported Item**(*No Add Airtag);
- If you have already bound items, please click on the right side **"+"** button to **Add Other Item**.



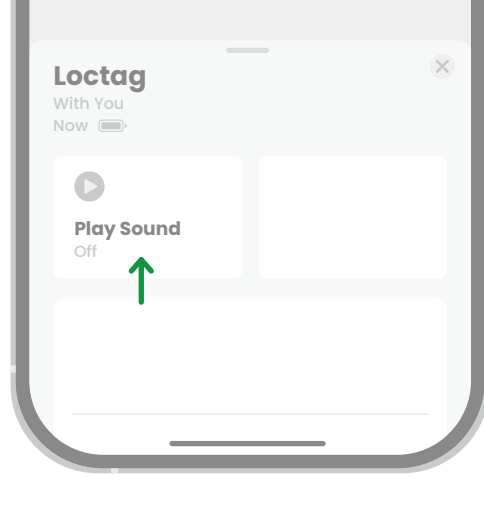
3. Connect the device

- During the Searching Items process, the word "LT1" will pop up and simply **click on "Connect"** to establish a connection.
- Click on the device found in the APP and name it.



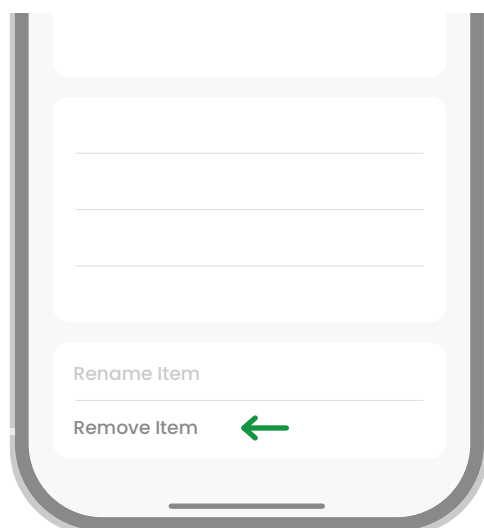
4. Play sound

After naming, you can use device functions: Ring the device, click **Play Sound**, and the device will emit music.



5. Remove Device

You can unbind at the bottom of the device details page. Once removed, the device can be bound again.



LocTag LT1 VS AirTag



Battery Life	30+ Months	12 Months
Dimensions	84.5×54.4 mm 3.3×2.1 in	31.9 mm 1.26 in
Thickness	1.8 mm / 0.07 in	8 mm / 0.31 in
dB Speaker	65+ dB	60 dB
Weight	14.2 g / 0.5 oz	11 g / 0.39 oz

Specifications

Connectivity Tech	Bluetooth Low Energy (10-20 m)
Size	84.5×54.4×1.8 mm / 3.3×2.1×0.07 in
Weight	14.2 g / 0.5 oz
Color	Black
Materials	CNC machined aluminium, Strong anti-explosion glass
Battery	Built-in 540mAh Lithium ion battery
Battery Life	30+ Months
Compatibility	Only iOS Devices
App	Find My app (Built-in software of the iOS)
Certification	Apple MFi, CE, FCC